



House - Detached (EPC Rating: C)

15 GALLAGHER COURT, AIRDRIE, ML6 9GE

Offers over

£319,995

FEATURES

- Detached house
- Open-plan Kitchen, Dining/Family Room
- Master with en-suite & Juliette Balcony
- Integral garage
- 4 Spacious Bedrooms
- Utility Room
- Enclosed rear garden
- Patio doors to garden



SWEET HOME



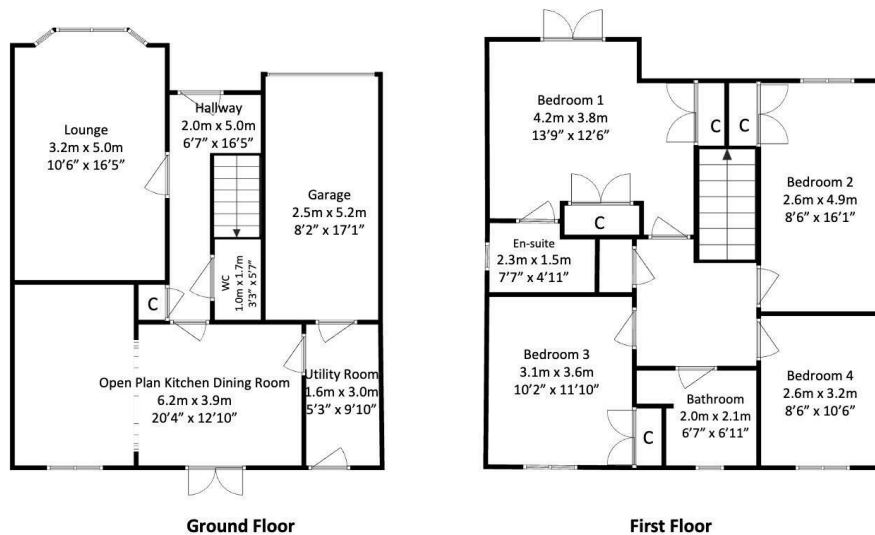
4 Bedroom House - Detached located in Airdrie

Caroline Morrison of Sweet Home Scotland is delighted to present this fantastic four-bedroom detached property located in the desirable area of Cairnhill, Airdrie. This home offers a perfect blend of comfort and modern living, making it an ideal choice for families.

Upon entering, you are welcomed by a spacious ground floor hall that leads to a well-appointed lounge at the front of the house, providing a cosy space for relaxation. The ground floor also features a convenient WC and a large open-plan kitchen and dining family room. This inviting area is perfect for entertaining and family gatherings, with patio doors that open directly to the rear garden, allowing for a seamless indoor-outdoor experience. Additionally, there is a separate utility room with access to the rear garden and an integral garage, enhancing the practicality of this home.

Moving to the upper floor, you will find four generously sized bedrooms, including a master suite complete with an en-suite bathroom and Juliette Balcony for added privacy and convenience. A family bathroom serves the other bedrooms, ensuring ample facilities for all.

Externally, the property boasts a mono bloc driveway, providing off-street parking, and an enclosed rear garden that features both a lawn and a patio area, perfect for outdoor activities and summer



Call us on

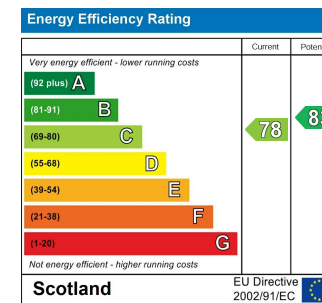
01236 677500

sales@sweet-home.co.uk

<https://sweet-home.co.uk/>

Council Tax Band

F



Agents Note: Whilst every care has been taken to prepare these particulars, they are for guidance purposes only. All measurements are approximate and are for general guidance purposes only and whilst every care has been taken to ensure their accuracy, they should not be relied upon and potential buyers are advised to recheck the measurements.

